



PANEL INSTALLATION SHOWN

Mortar: Western Type- S
 Joint Type: Raked
 Size- 11 5/8" x 23 5/8" thermalled finish

COMMON APPLICATIONS

- BLUESTONE _____
- ACCESSORIES _____
 (e.g. quoins, keystones, light mounts)
- BALUSTERS & COLUMNS _____
- DOOR & WINDOW SURROUNDS _____
- FIREPLACE SURROUNDS _____
- HEARTHS & MANTELS _____
- PIER CAPS _____
- SILLS _____



CUT STONE
BLUESTONE
PANELS, CUT STONE
& SLABS

GEOLOGY: limestone- quarried in USA

COLOR RANGE
 ranges of blues, greens, and browns

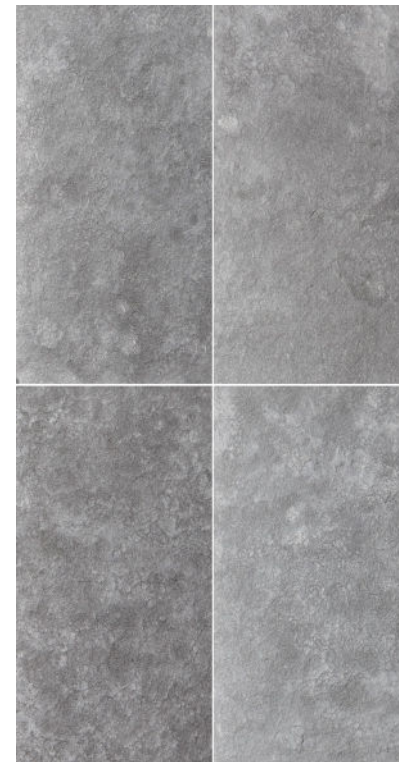
COLOR CONSISTENCY PER BLOCK/SLAB
 somewhat consistent

WEIGHT CALCULATED IN INCHES
 l x w x h / 1728 (inches cubed) x 160
 = approx 160 pounds per cubic foot

ASTM TESTING DATA

BLUESTONE C97 water absorption—1.57%
 BLUESTONE C170
 compressive strength w/rift— 10,200 psi
 compressive strength across rift—17,400 psi
 BLUESTONE C880
 flexural strength w/rift—1,600 psi
 flexural strength across rift—2,120 psi
 BLUESTONE C241 abrasion resistance—28

THERMALLED



ARCHITECT/DESIGNER INFO
MATERIAL BANK

SKU: SM09007

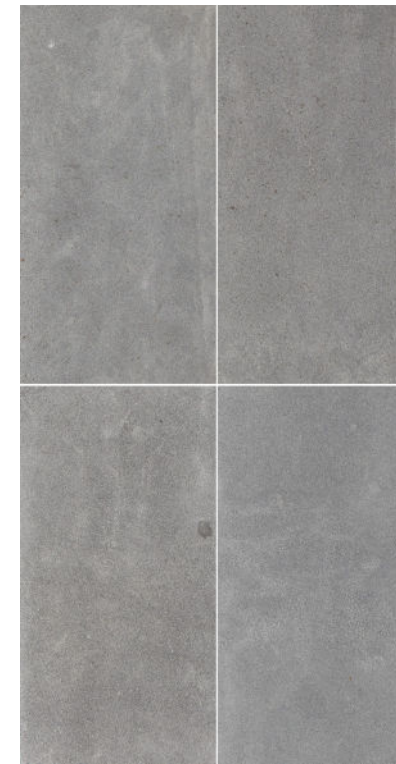


BIM DETAILS

Revit, Hatch Patterns,
 Seamless Textures, 3-Part
 Specs, DWGS, SDS,
 Warranty



BRUSHED



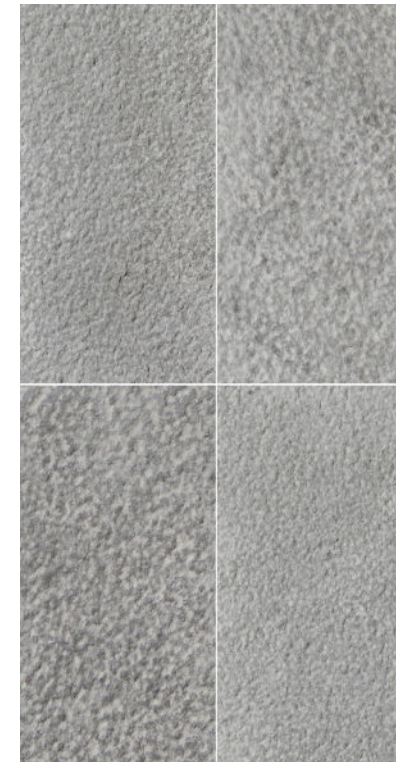
BUSHHAMMERED



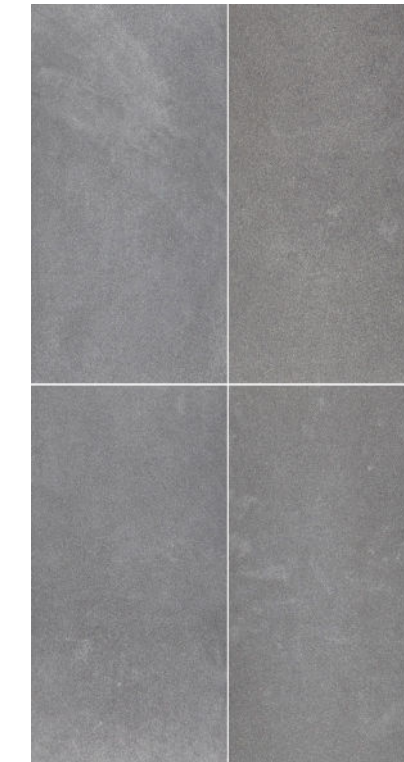
BURNISHED



VELOUR



SANDED



SANDBLASTED



CUT STONE
BLUESTONE
PANELS, CUT STONE
& SLABS



www.buechelstone.com



www.buechelstone.com