



PANEL INSTALLATION SHOWN

Mortar: Western Type- S
 Joint Type: raked
 Size- 3 3/4" & 7 3/4" x random length-
 thermalled finish

COMMON APPLICATIONS

- ROYAL BELUGA _____
- ACCESSORIES _____
 (e.g. quoins, keystones, light mounts)
- BALUSTERS & COLUMNS _____
- DOOR & WINDOW SURROUNDS _____
- FIREPLACE SURROUNDS _____
- HEARTHS & MANTELS _____
- PIER CAPS _____
- SILLS _____



CUT STONE
ROYAL BELUGA
PANELS, CUT STONE
& SLABS

GEOLOGY: dolomitic limestone - quarried in Ireland & USA

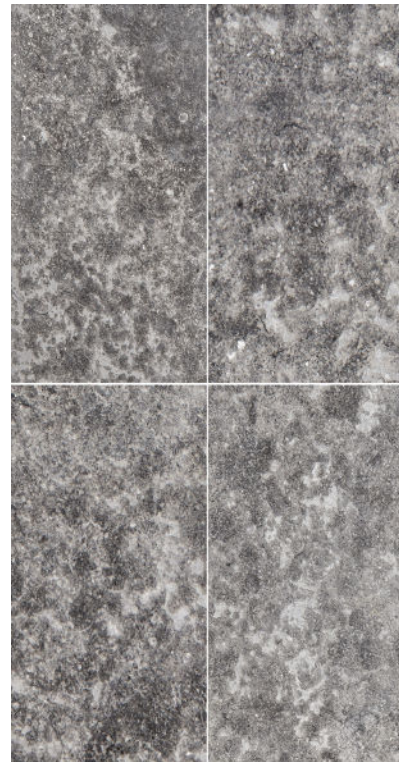
COLOR RANGE
 charcoal, gray, light gray to white; occasional swirls; flecks of white and veining; somewhat variegated

COLOR CONSISTENCY PER BLOCK/SLAB
 somewhat consistent

WEIGHT CALCULATED IN INCHES
 l x w x h / 1728 (inches cubed) x 169 = approx 169 pounds per cubic foot

ASTM TESTING DATA
 ROYAL BELUGA C97 water absorption—0.24%
 ROYAL BELUGA C97 density—168.9 pcf
 ROYAL BELUGA C97 specific gravity—2.705
 ROYAL BELUGA C170 compressive strength wet (random rift orientation)—10,640 psi
 dry (random rift orientation)—14,010 psi

THERMALLED



ARCHITECT/DESIGNER INFO
MATERIAL BANK

SKU: SM09010



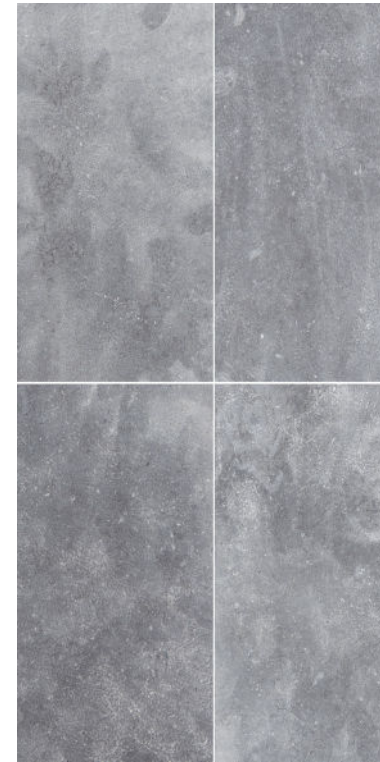
BIM DETAILS

Revit, Hatch Patterns,
 Seamless Textures, 3-Part
 Specs, DWGS, SDS,
 Warranty

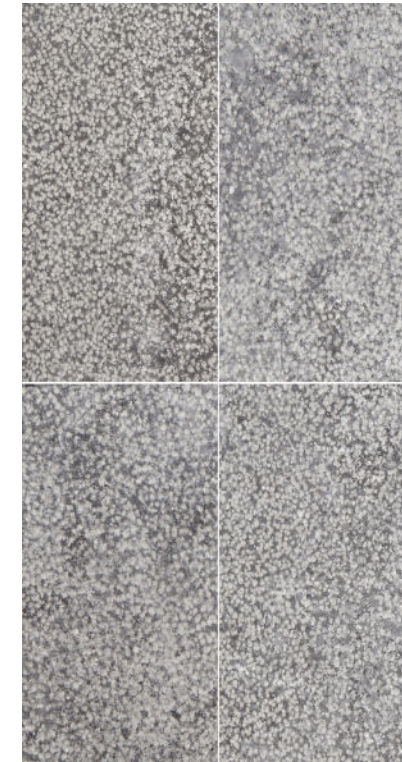


CUT STONE
ROYAL BELUGA
PANELS, CUT STONE
& SLABS

BRUSHED



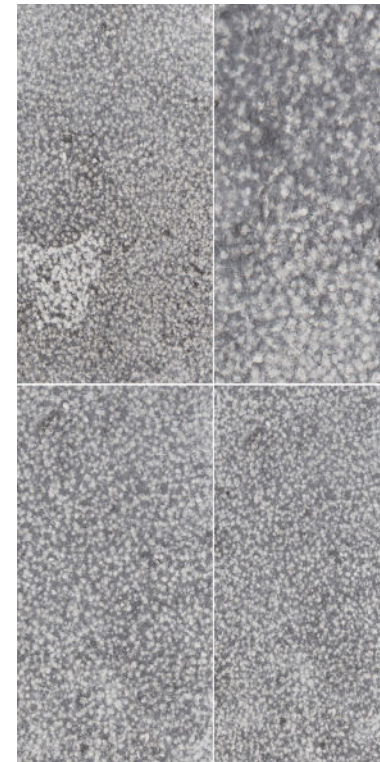
BUSHHAMMERED



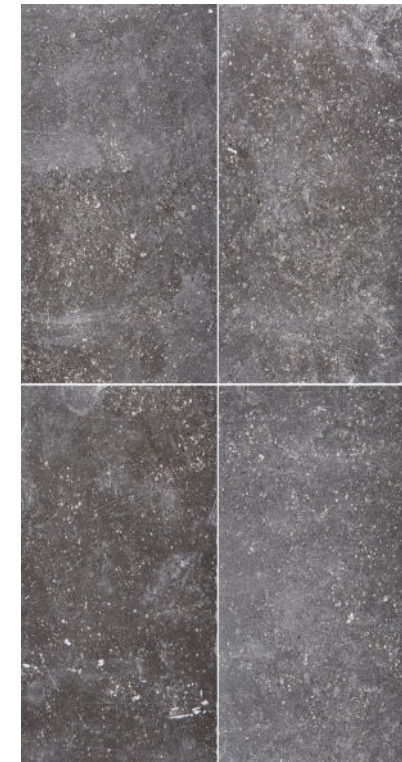
SANDBLASTED



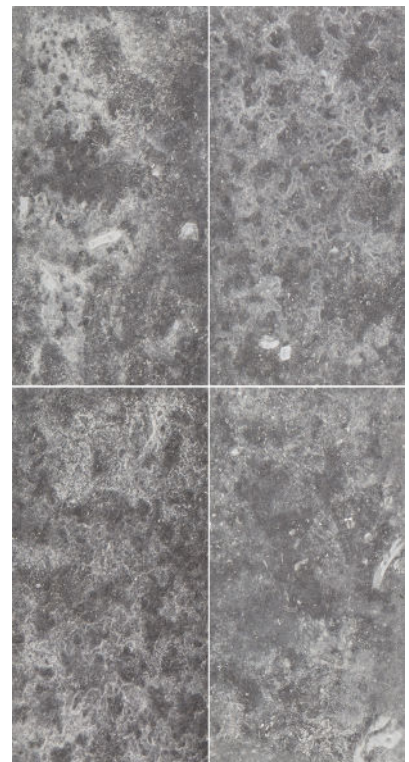
VELOUR



SANDED



BURNISHED



www.buechelstone.com



www.buechelstone.com