



**CUT STONE**  
**AGED PARCHMENT**  
**PANELS, CUT STONE**  
**BLOCKS & SLABS**

**GEOLOGY:** limestone- quarried in USA

**COLOR RANGE**

yellows & creams to slight buffs, mocha & cool grays, mottled with occasional fossils; swirls are common

**COLOR CONSISTENCY PER BLOCK/SLAB**  
 somewhat consistent

**WEIGHT CALCULATED IN INCHES**

l x w x h / 1728 (inches cubed) x 119  
 = approx 119 pounds per cubic foot

**ASTM TESTING DATA**

AGED PARCHMENT C97 water absorption—6.53%  
 specific gravity — 1.875 to 1.946  
 density—119 lbs/ft<sup>3</sup>  
 AGED PARCHMENT C170 dry perpendicular—2,320 psi  
 wet perpendicular—1,650 psi  
 dry parallel —2,770 psi  
 wet parallel—1,770 psi  
 AGED PARCHMENT C1353 abrasion—2.2  
 AGED PARCHMENT ANSI A326.3 friction—0.82  
 AGED PARCHMENT C880 flexural strength-wet —550 psi  
 flexural strength-dry —700 psi

**PANEL INSTALLATION SHOWN**

Mortar: Western W-11  
 Joint Type: Raked  
 Size- 11 5/8" x 23 5/8" thermalled finish



www.buechelstone.com

**ARCHITECT/DESIGNER INFO**  
**MATERIAL BANK**

SKU: SM09001



**BRUSHED**



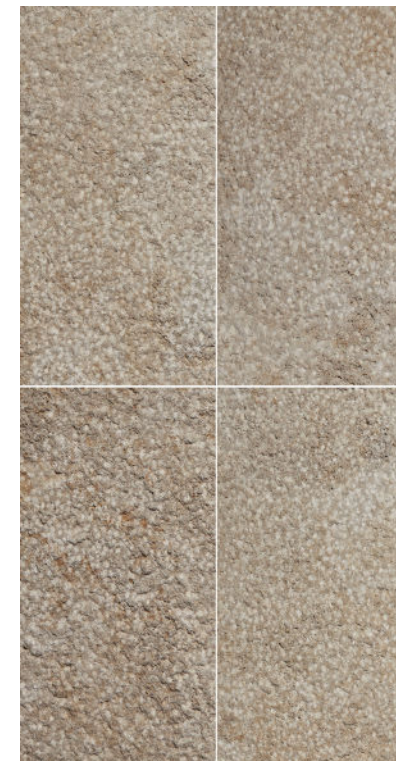
**BUSHHAMMERED**



**SANDBLASTED**



**VELOUR**



**SANDED**



**BIM DETAILS**

Revit, Hatch Patterns,  
 Seamless Textures, 3-Part  
 Specs, DWGS, SDS,  
 Warranty



**CUT STONE**

**AGED PARCHMENT**  
**PANELS, CUT STONE**  
**BLOCKS & SLABS**

**COMMON APPLICATIONS**

- AGED PARCHMENT
- ACCESSORIES \_\_\_\_\_
- (e.g. quoins, keystones, light mounts)
- BALUSTERS & COLUMNS \_\_\_\_\_
- DOOR & WINDOW SURROUNDS \_\_\_\_\_
- FIREPLACE SURROUNDS \_\_\_\_\_
- HEARTHES & MANTELS \_\_\_\_\_
- PIER CAPS \_\_\_\_\_
- SILLS \_\_\_\_\_



www.buechelstone.com